

Bhusawal Arts, Science and P O Nahata Commerce College, Bhusawal

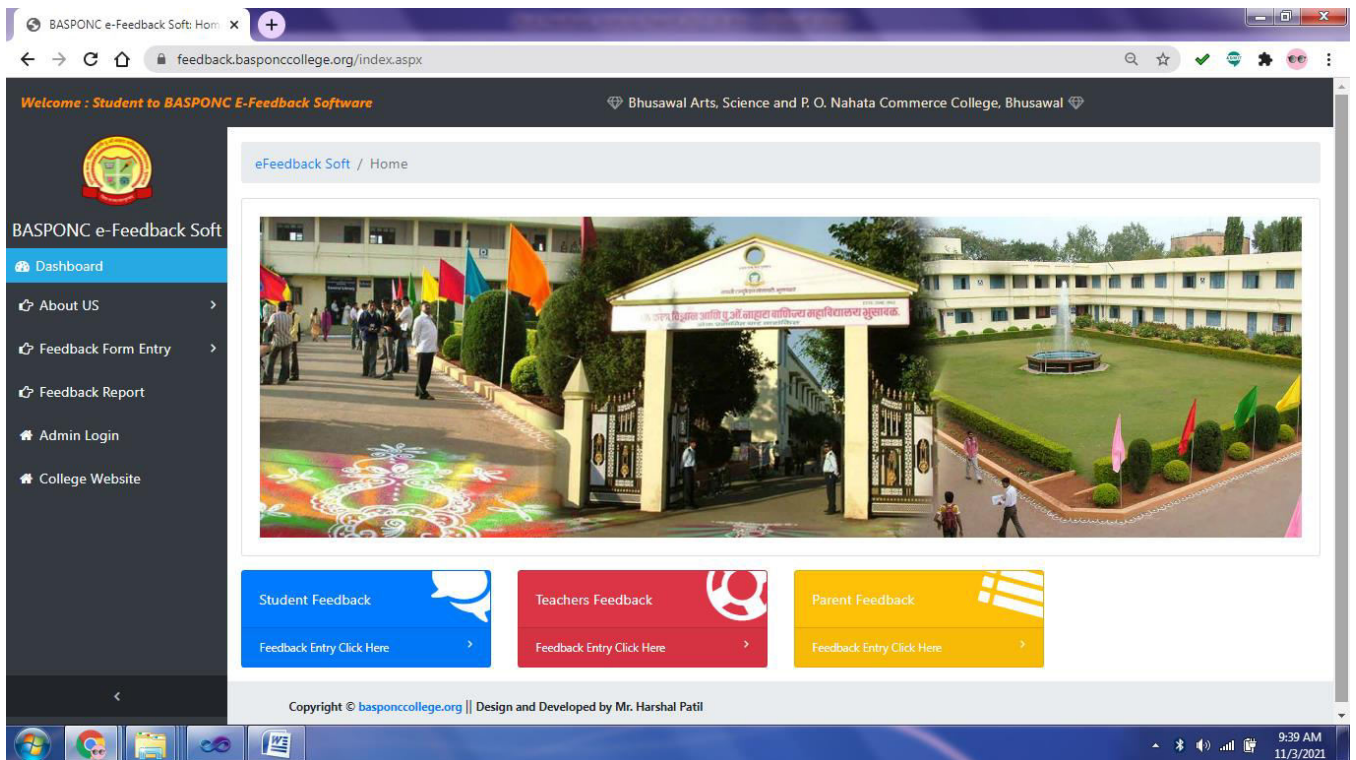
Teacher Feedback Analysis Report 2017-18

Feedback Type: Online

Website address: <https://www.basponccollege.org/>

Direct Link URL: <https://feedback.basponccollege.org/>

Screen Shot of Feedback Panel:



Summary of Statistics of Feedback Received:

Sr. No	Feedback Category	Total numbers of Stakeholder recorded feedback	Average Opinions of Answer in Percentage
1	Teacher Feedback	114	90.44%

Category: Teacher Feedback

Total number of Teacher's recorded feedback: 114

Total number of questions attempted: 13

Teacher Feedback Form 2017-18

Online Fill Form

The screenshot shows the 'Teacher Basic Details Entry' form. The page title is 'e-Feedback Software / Teachers Feedback Form Entry'. The form includes a text input for 'Teacher Full Name' with the value 'Prof. P. M. Dave'. Below this are three dropdown menus: 'Select Faculty:' with 'Arts', 'Select Department:' with 'History', and 'Select Feedback Year:' with '2017-18'. A blue 'Next' button is positioned below the dropdowns. The left sidebar contains navigation options: Dashboard, About US, Feedback Form Entry, Feedback Report, Admin Login, and College Website. The right sidebar shows a 'Sub-Menu' with links to Dashboard, Student Feedback Form, Teachers Feedback Form, and Parents Feedback Form. The footer contains the copyright information: 'Copyright © basponcollege.org || Design and Developed by Mr. Harshal Patil'.

The screenshot shows the 'Teacher Feedback Questions Entry' form. The page title is 'e-Feedback Software / Teachers Feedback Form Entry'. The form displays a table with 7 rows of feedback questions and their corresponding replies. The table has three columns: 'Sr. No', 'Questions', and 'Reply'. The 'Reply' column contains dropdown menus with values like 'Very Gc' and 'Good'. The left sidebar and right sidebar are identical to the previous screenshot. The footer contains the copyright information: 'Copyright © basponcollege.org || Design and Developed by Mr. Harshal Patil'.

Sr. No	Questions	Reply
1	Current syllabus is need based	Very Gc
2	Curriculum having current content	Very Gc
3	Programmes outcomes of the syllabi is well defined	Very Gc
4	The course content fulfils the need of students	Good
5	Curriculum enhanced employability	Very Gc
6	ICT facilities in the college are adequate and satisfactory	Good
7	The college has given me full freedom to adopt new techniques / strategies of teaching such as group discussions, seminar presentations and learners' participation	Good

Feedback: Teacherwise Feedback

feedback.basponcollege.org/FeedbackEntryForm/teacherFeedbackForm.aspx

Welcome : Student to BASPNC E-Feedback Software

Bhusawal Arts, Science and P. O. Nahata Commerce College, Bhusawal

teaching such as group discussions, seminar presentations and learners' participation

8	The prescribed books are available in the Library in Sufficient numbers	Very Gc
9	The environment in the College is conducive to teaching and research	Good
10	The administration is teacher friendly	Good
11	The college provides adequate opportunities and support to faculty members for upgrading their skills and qualifications	Very Gc
12	The classrooms are clean and well maintained	Good
13	Suggestions (Maximum 500 Words)	
	Very Good Environment for Teaching	

Submit

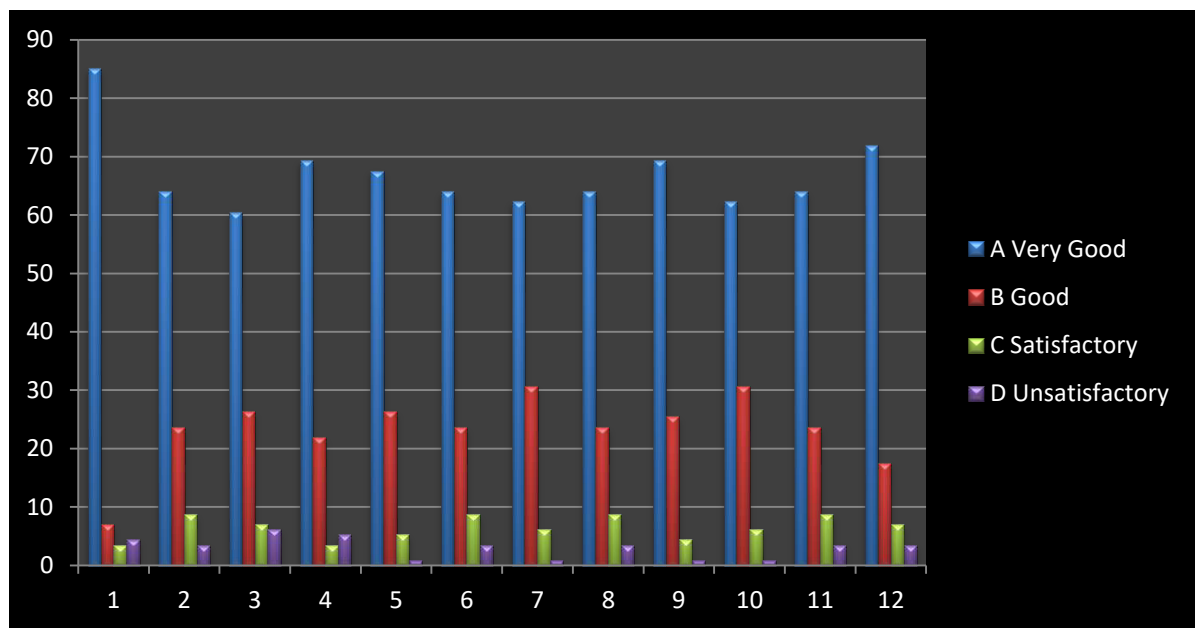
You are @ Teachers Feedback Form Details Page

Tabular Analysis of Teacher's Feedback Response:

Sr. No	Nature of Question	Opinions of Answer in Percentage				Scale of Opinion
		A Very Good	B Good	C Satisfactory	D Unsatisfactory	Very Good And Good
1	Current syllabus is need based	85.09	7.02	3.51	4.39	% of Opinion 92.11
2	Curriculum having current content	64.04	23.69	8.78	3.51	87.73
3	Programmes outcomes of the syllabi is well defined	60.53	26.32	7.02	6.15	86.85
4	The course content fulfils the need of students	69.3	21.93	3.51	5.27	91.23
5	Curriculum enhanced employability	67.55	26.32	5.27	0.88	93.87
6	ICT facilities in the college are adequate and satisfactory	64.04	23.69	8.78	3.51	87.73
7	The college has given me full freedom to adopt new techniques / strategies of teaching such as group discussions, seminar presentations and learners'	62.29	30.71	6.15	0.88	93

	participation					
8	The prescribed books are available in the Library in Sufficient numbers	64.04	23.69	8.78	3.51	87.73
9	The environment in the College is conducive to teaching and research	69.3	25.44	4.39	0.88	94.74
10	The administration is teacher friendly	62.29	30.71	6.15	0.88	93
11	The college provides adequate opportunities and support to faculty members for upgrading their skills and qualifications	64.04	23.69	8.78	3.51	87.73
12	The classrooms are clean and well maintained	71.93	17.55	7.02	3.51	89.48
13	Suggestions	Recorded				
Average Rating						90.44

Graphical Analysis of Teacher's Feedback Response:



Average Rating of Teacher's Feedback Response in percentage: 90.44 %



MUR
PRINCIPAL
 Bhusawal Arts, Sci. & P.O. Nahata
 Com. College, Bhusawal